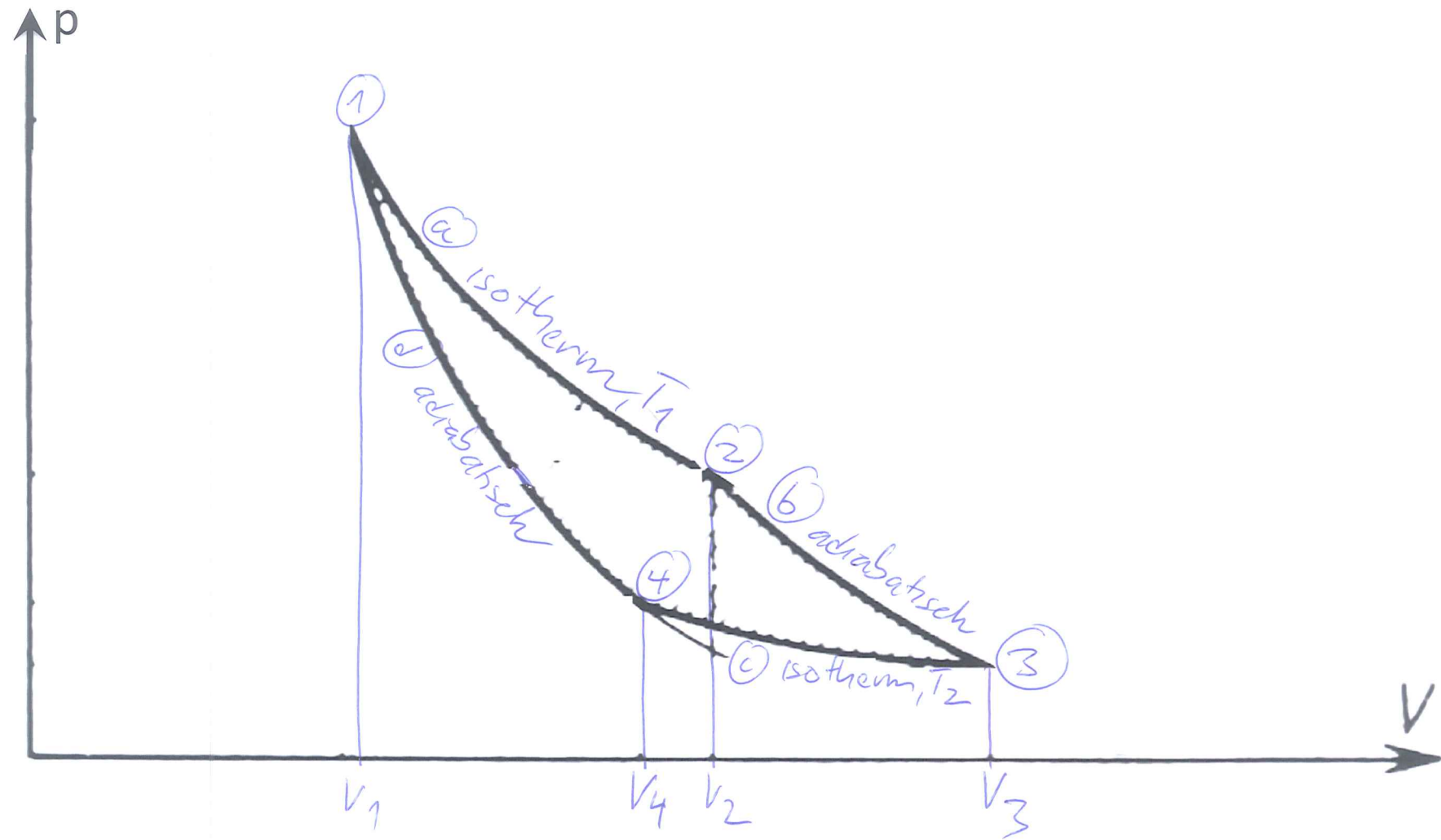
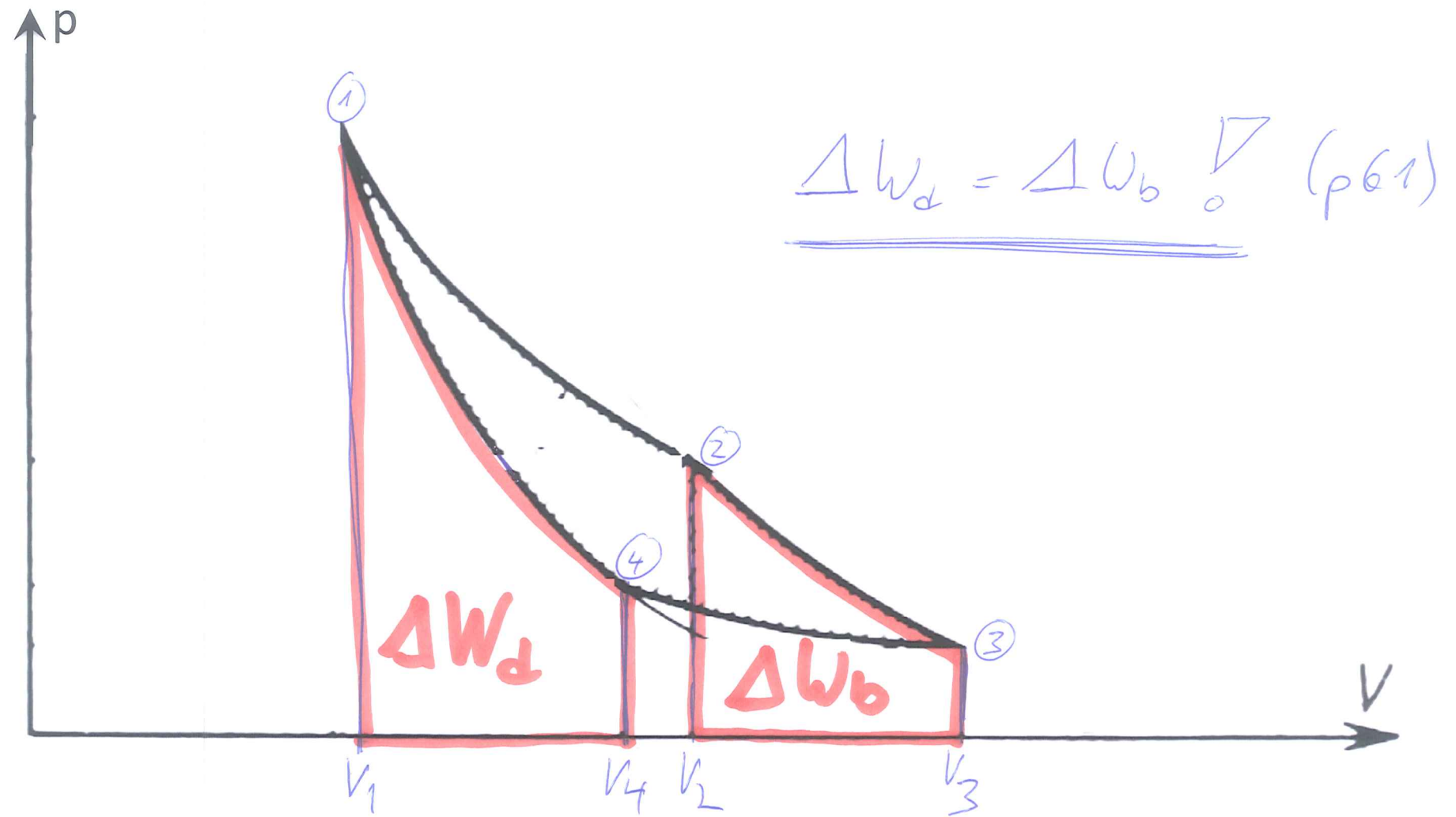


Wiederholung am 20.1.2015



Wiederholung am 20.1.2015

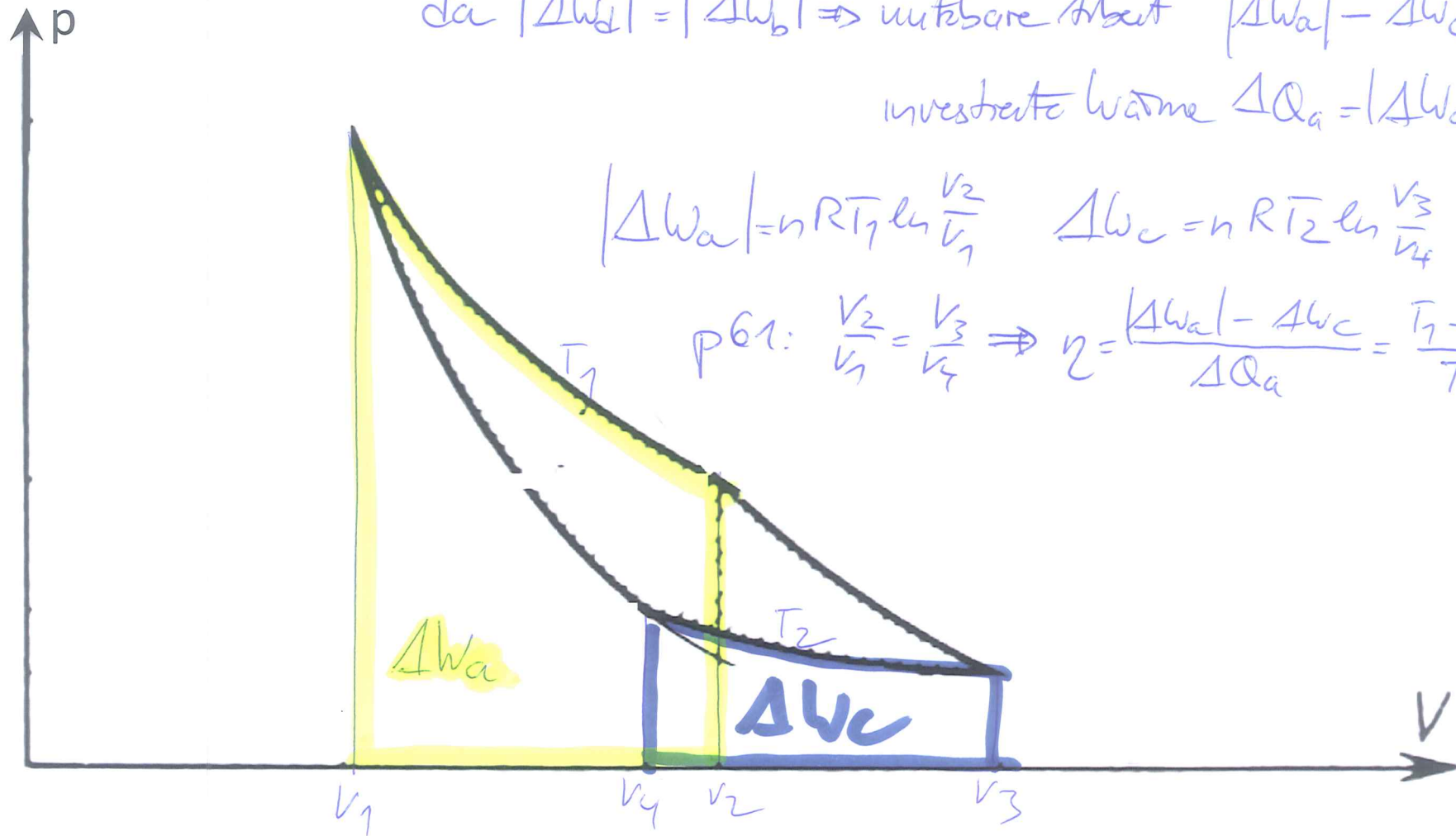


Wiederholung am 20.1.2015

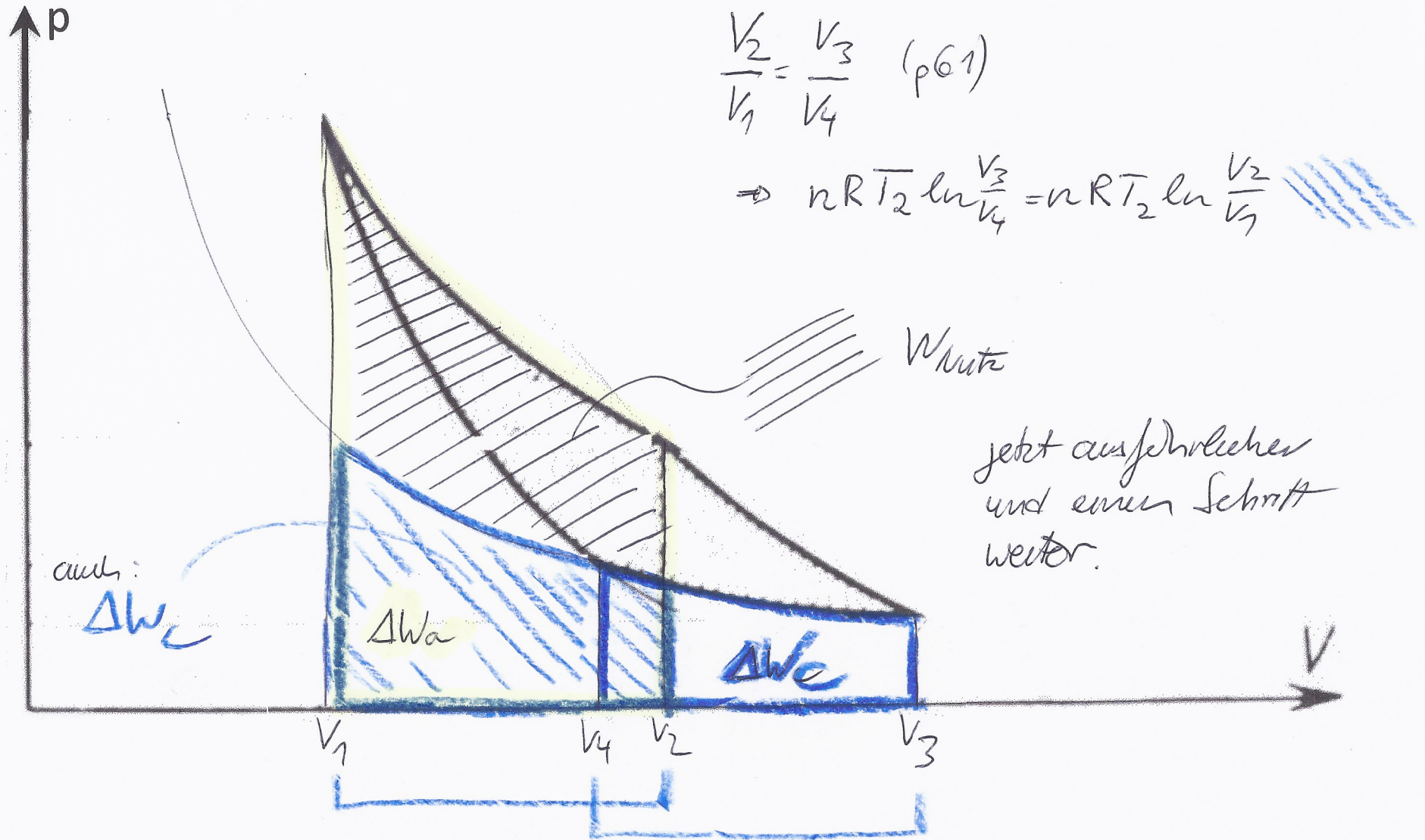
da $|\Delta W_a| = |\Delta W_b| \Rightarrow$ nutzbare Arbeit $|\Delta W_a| - \Delta W_c$
investierte Wärme $\Delta Q_a = |\Delta W_a|$

$$|\Delta W_a| = n R \bar{T}_1 \ln \frac{V_2}{V_1} \quad \Delta W_c = n R \bar{T}_2 \ln \frac{V_3}{V_4}$$

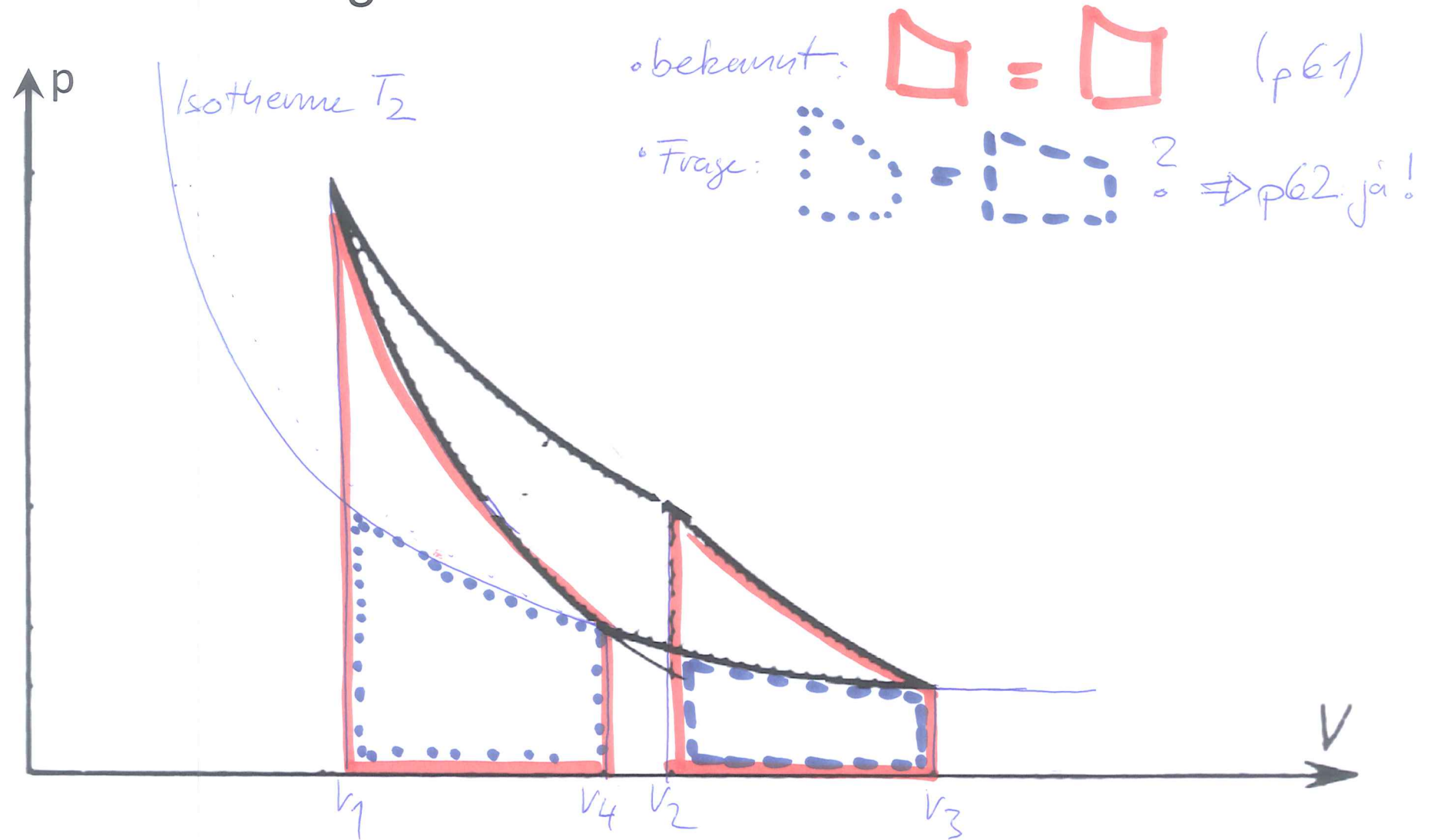
$$\text{p61: } \frac{V_2}{V_1} = \frac{V_3}{V_4} \Rightarrow \eta = \frac{|\Delta W_a| - \Delta W_c}{\Delta Q_a} = \frac{\bar{T}_1 - \bar{T}_2}{\bar{T}_1}$$



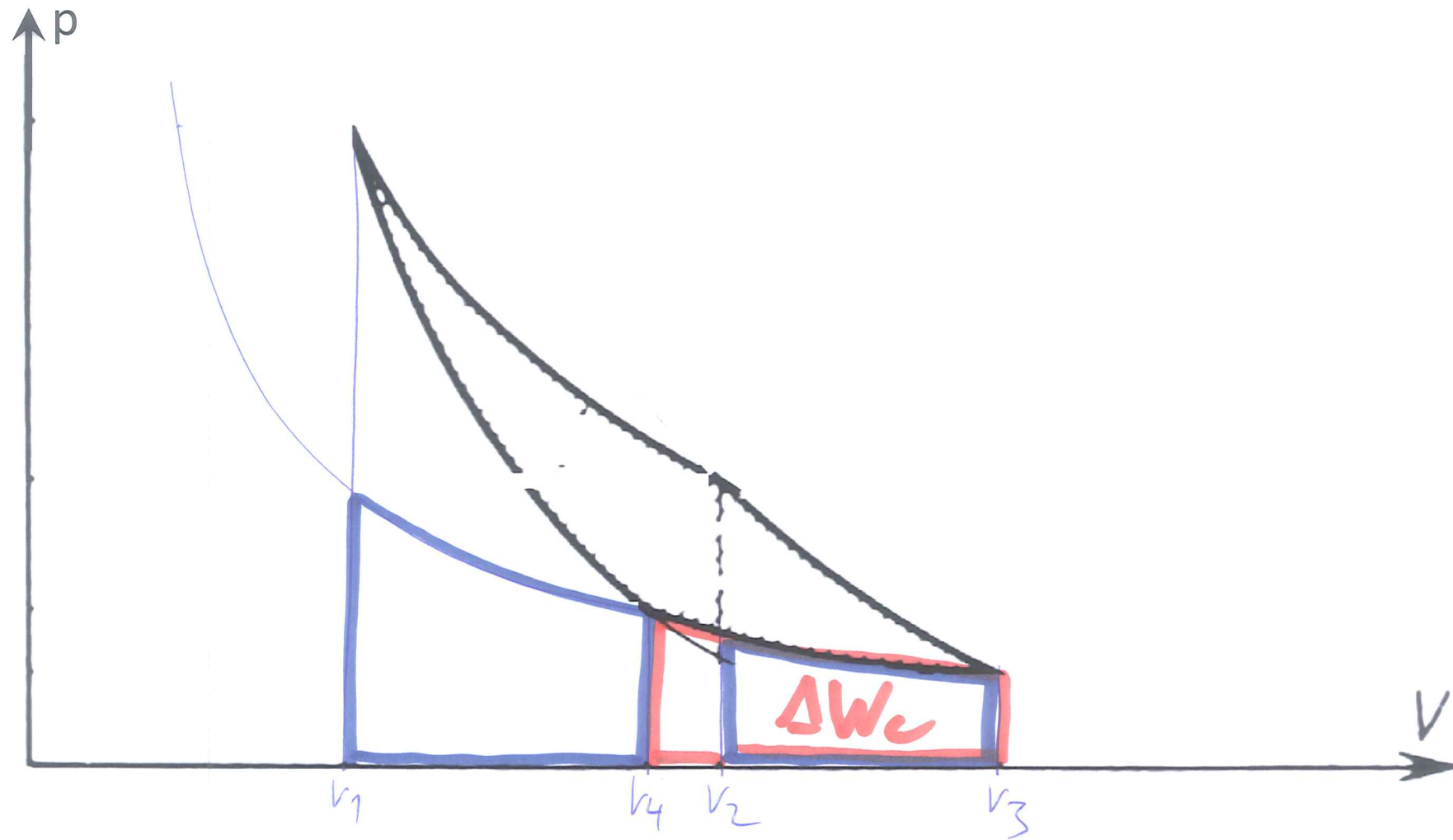
Wiederholung am 20.1.2015



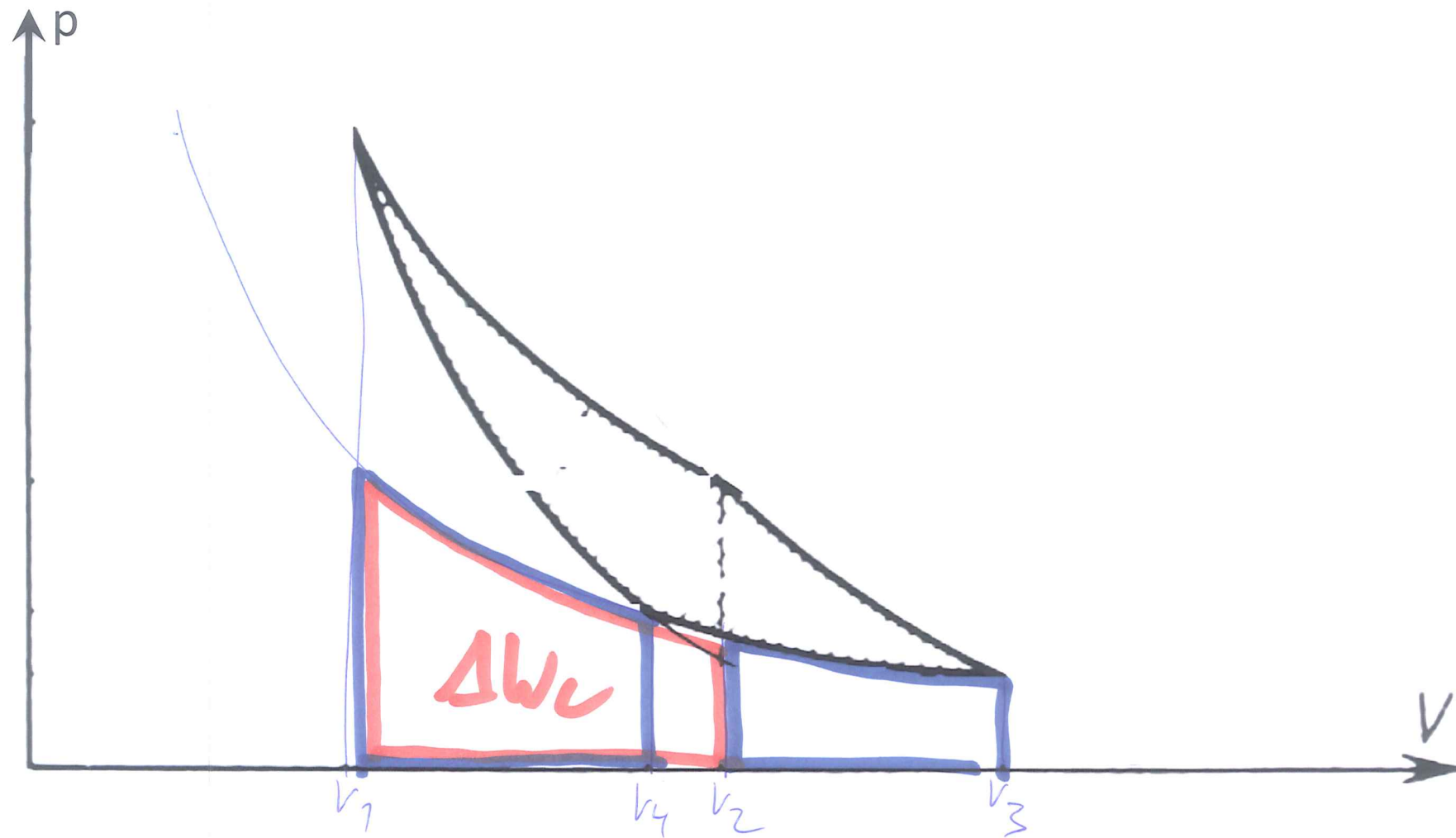
Wiederholung am 20.1.2015



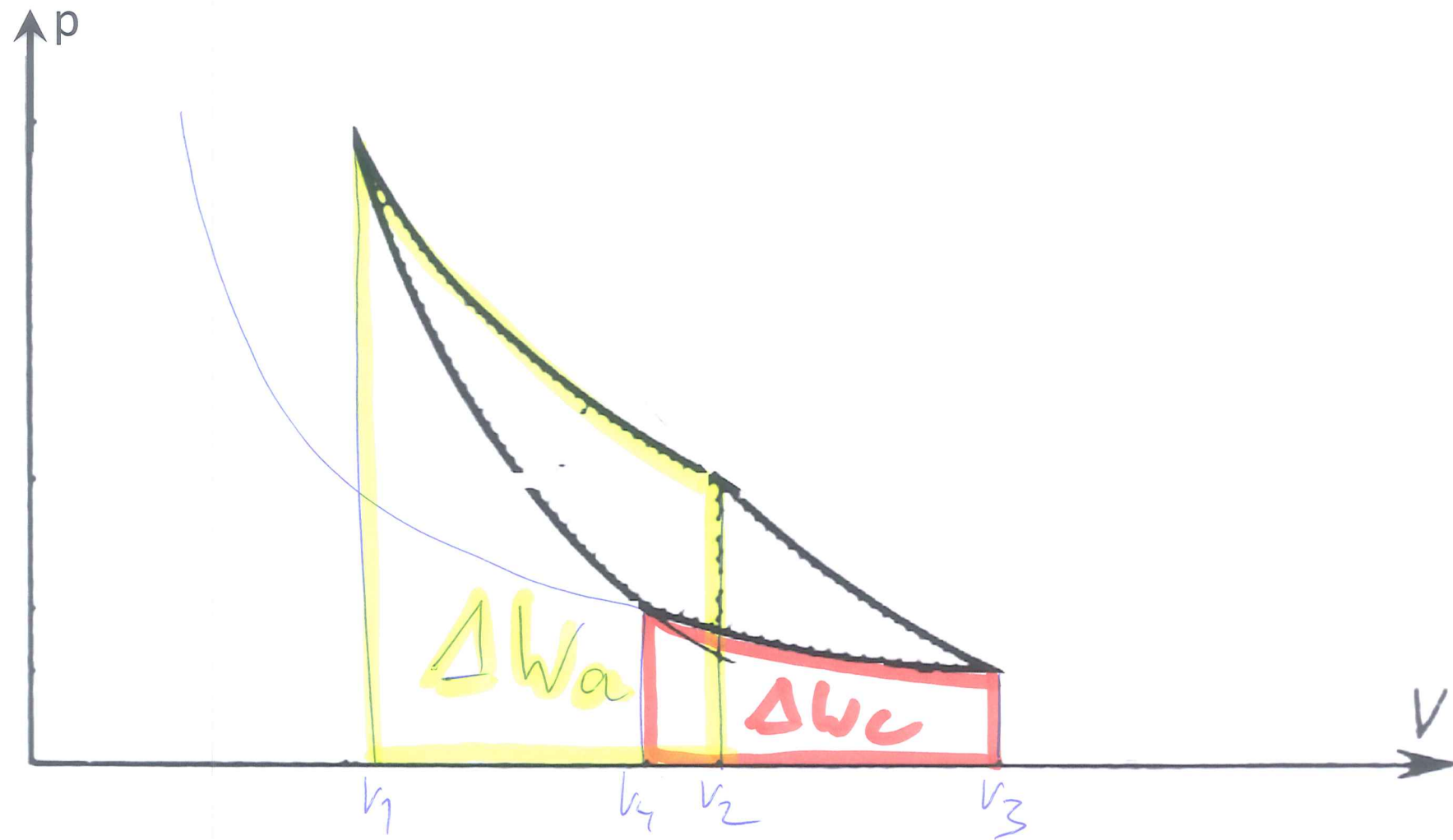
Wiederholung am 20.1.2015



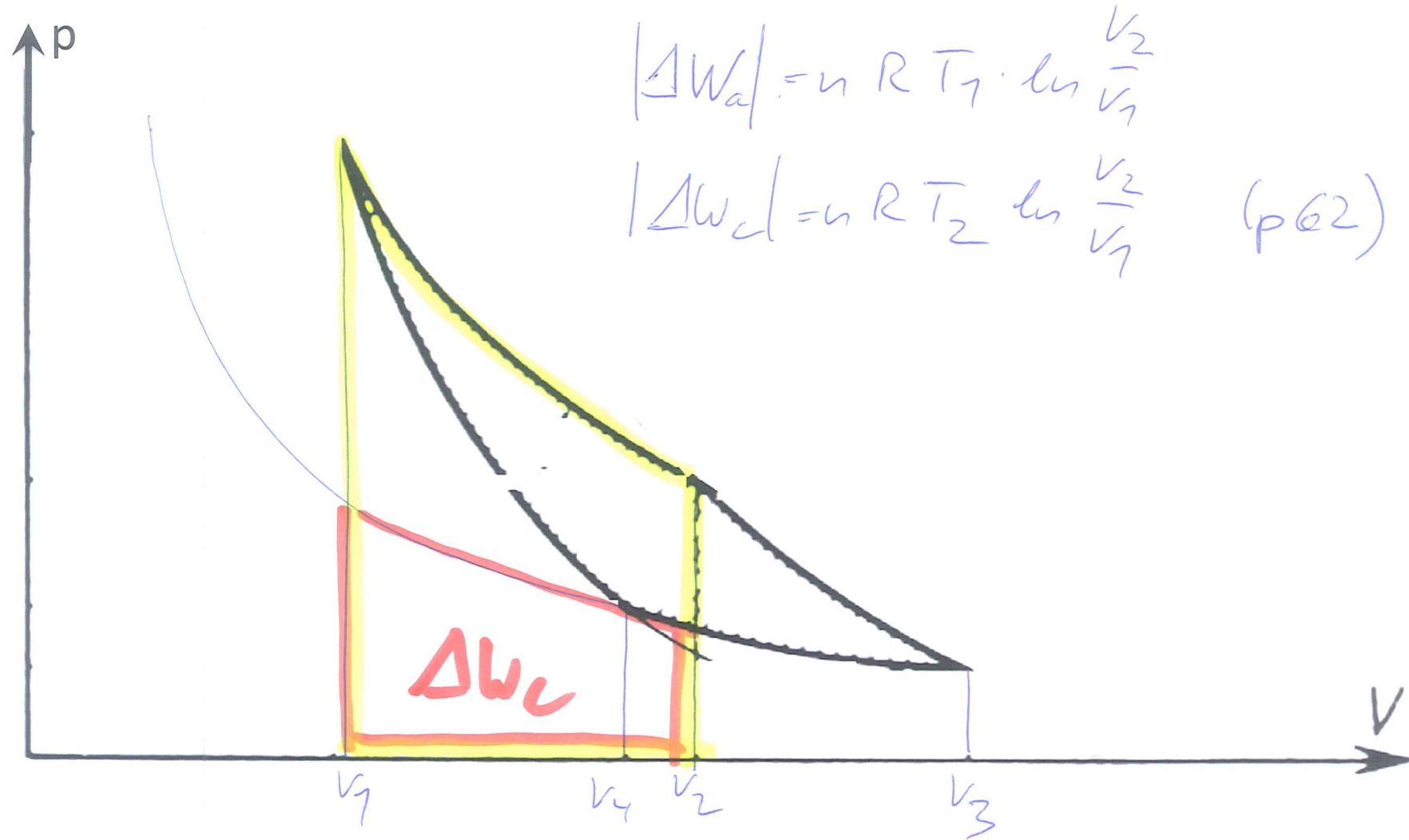
Wiederholung am 20.1.2015



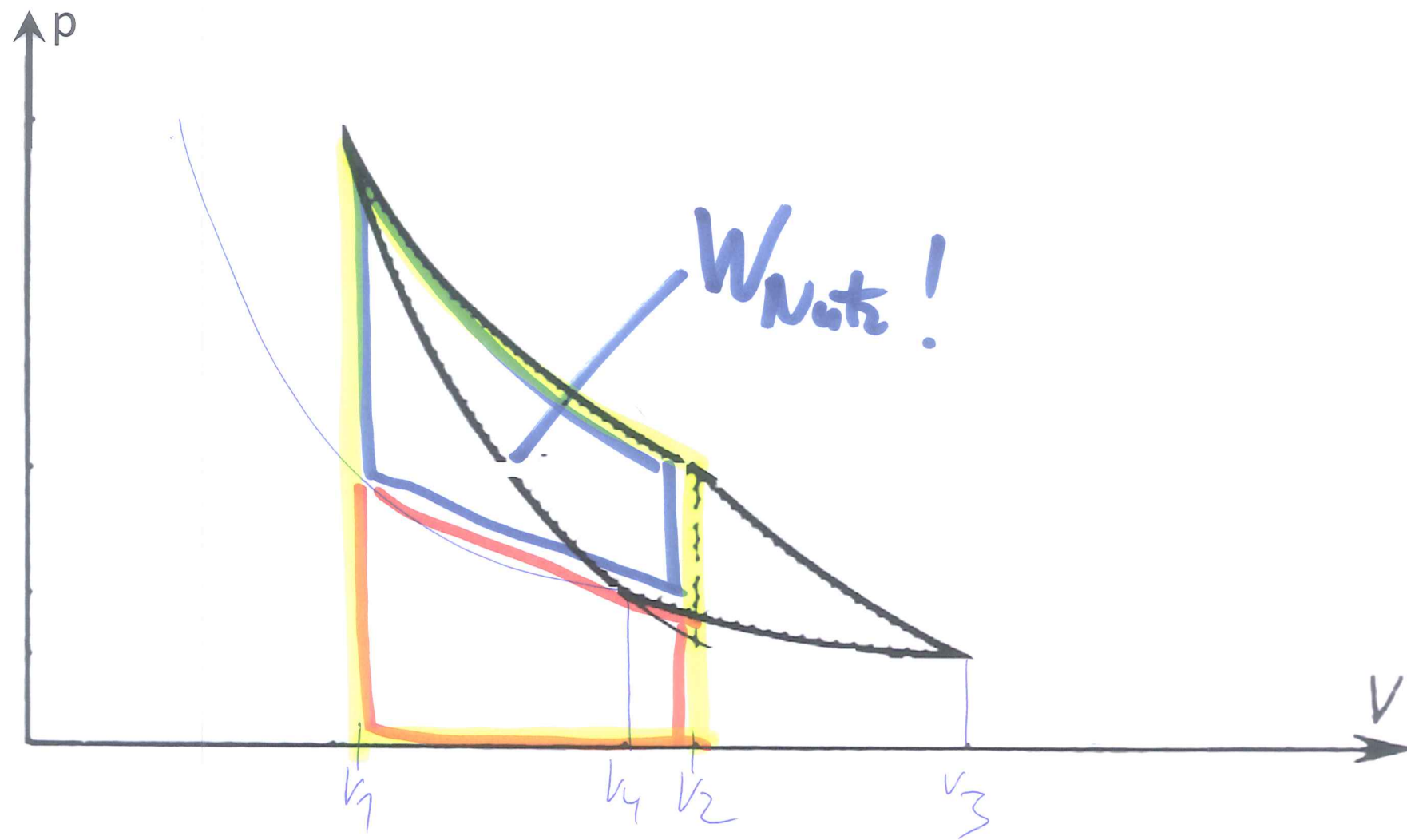
Wiederholung am 20.1.2015



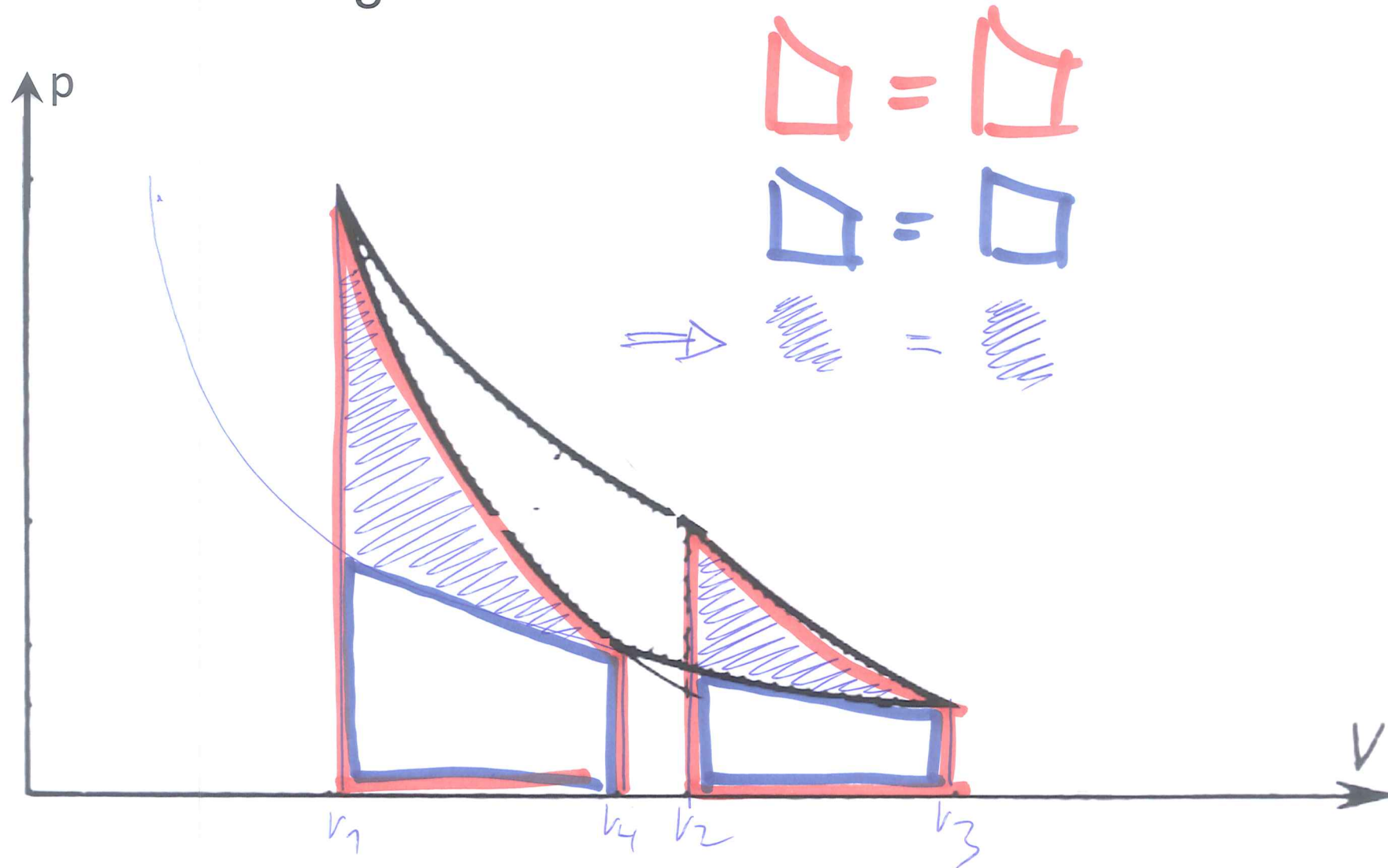
Wiederholung am 20.1.2015



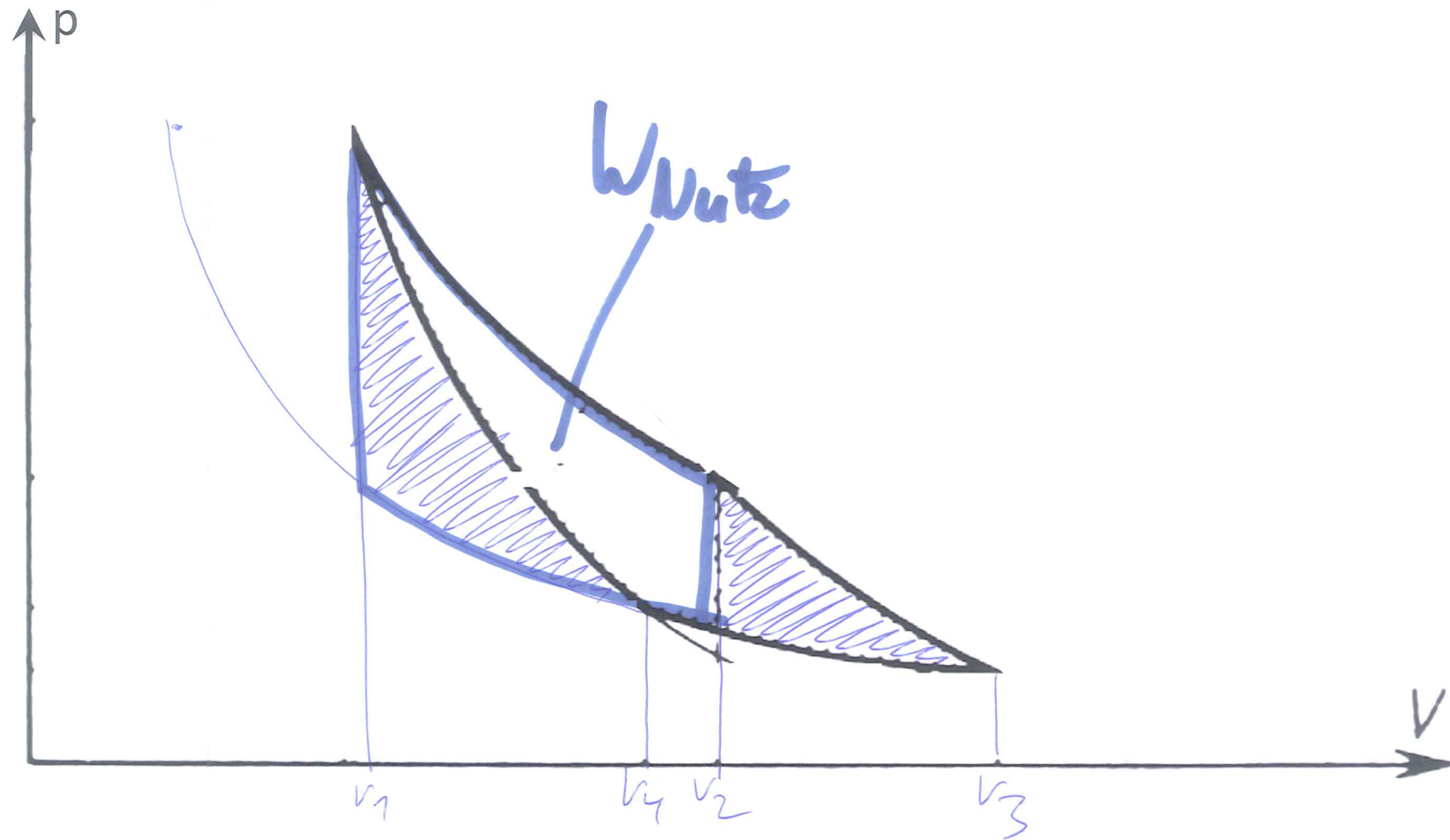
Wiederholung am 20.1.2015



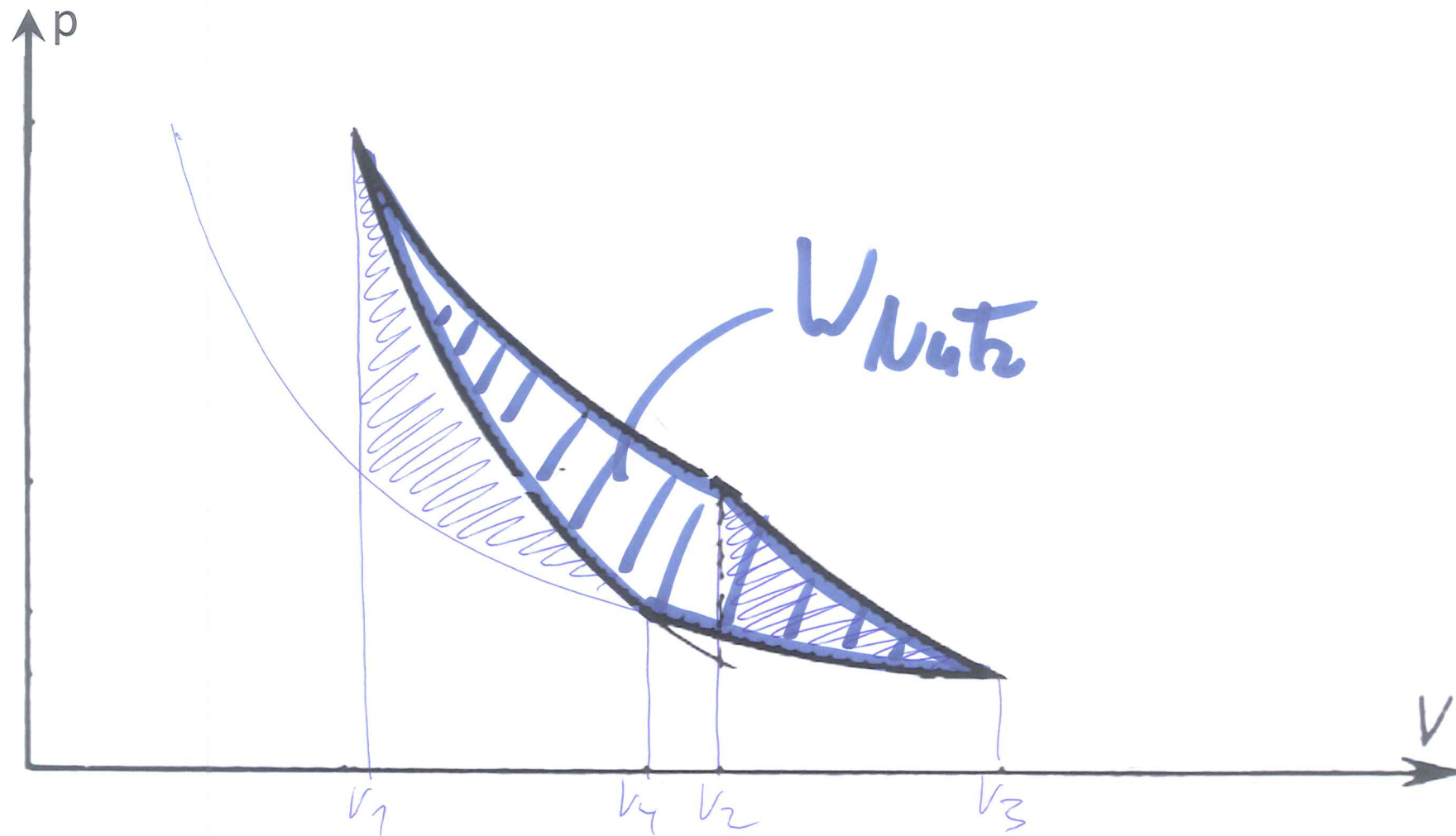
Wiederholung am 20.1.2015



Wiederholung am 20.1.2015



Wiederholung am 20.1.2015



Wiederholung am 20.1.2015

